



NABHRAJ ADWAIT

ENRICHING THE LUXURY LIFE



SCULPTED FOR THE PIONEERS OF TOMORROW

Let the wind carry the whisper from your lips,
let it make true your every wish.

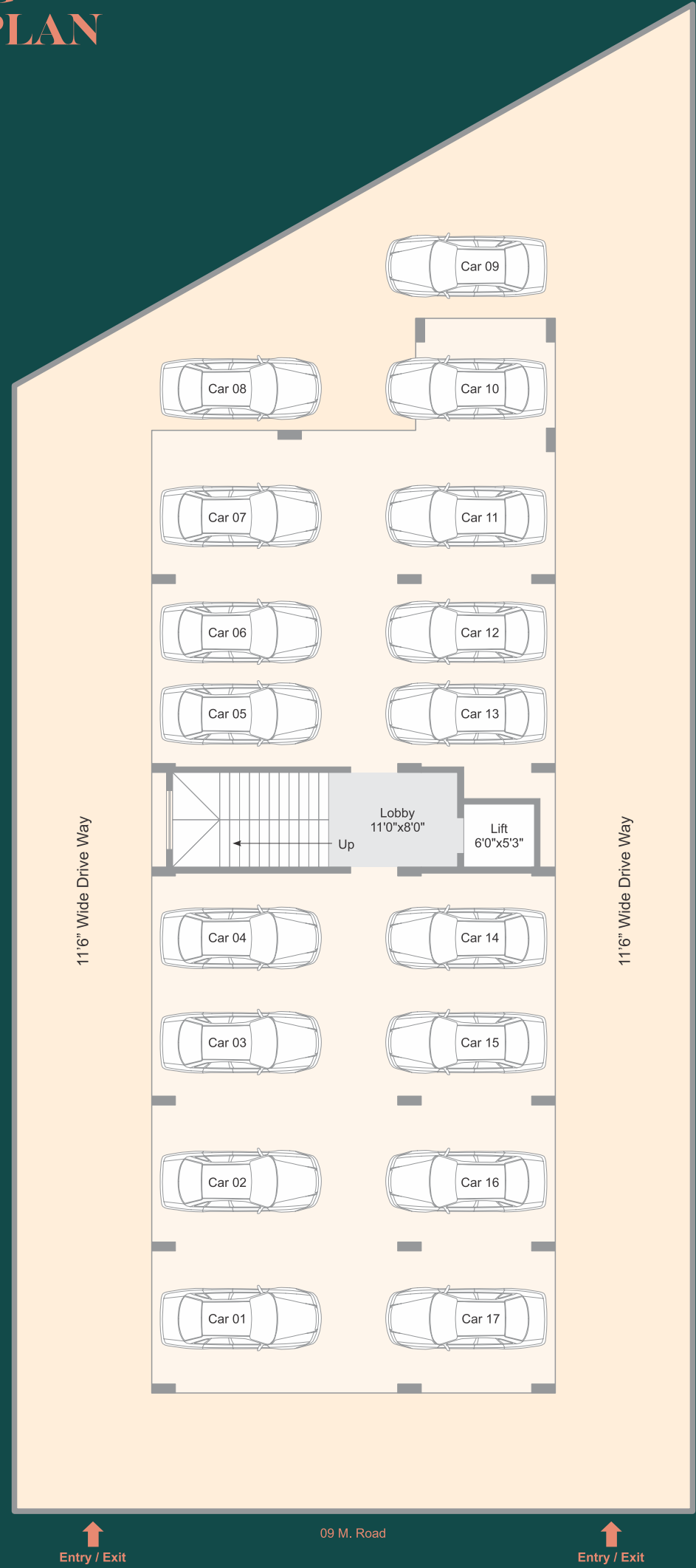
Let your desires be fulfilled at just a glance,
come to where nothing is left to chance.

Come to a paradise that never ceases to amaze,
to live a dream in your very own space.

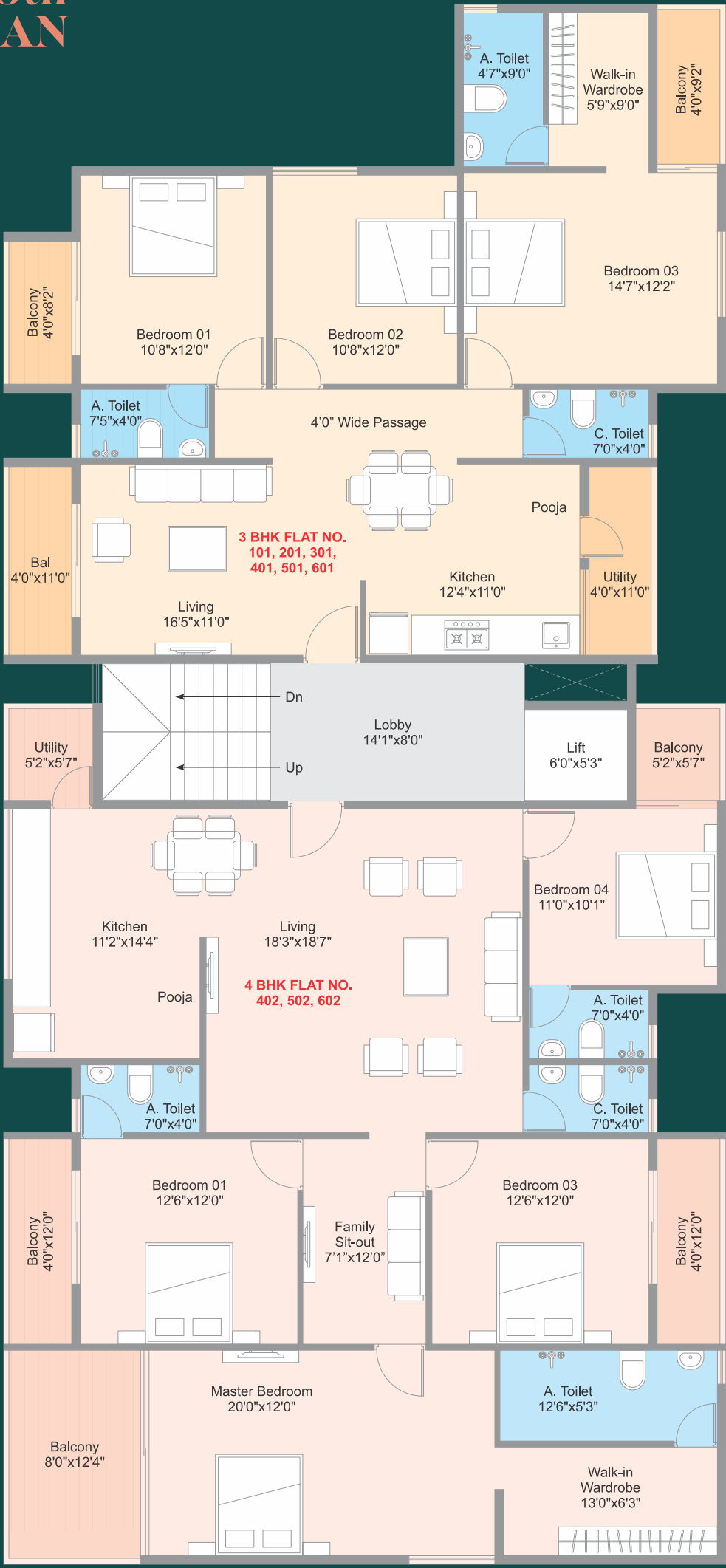
Come to life in a different dimension,
in the heart of golf course extension.

Come to a home like you have never seen before,
we welcome you to the Nabhraj Adwait

PARKING
FLOOR PLAN



4th, 5th & 6th
FLOOR PLAN



SPECIFICATIONS



STRUCTURE

- RCC framed structure with internal wall of 4" & external wall of 6" thick in AAC block work/brick work.
- FLOORING**
- All Rooms & Passage :- 600x600 / 1200x600 Simpolo / Kajaria or Equivalent vitrified tiles.
 - Toilet Dado :- 300x450 wall tiles upto lintel level.
 - Common Passage Of Stair Cases :- 600x600 (Vitrified/Ceramic) tiles.
 - Stair Case Steps :- Natural stone / Vitrified tiles.



DOORS

- Decorative main door with both side laminations with teak wood frame or plywood frame.
- Toilet doors are of granite frame with pinewood flush doors with side laminations / wood plastic composite door shutter (WPC).
- Rest of the doors are of plywood / granite frame with pinewood flush doors with both side laminations.



WINDOWS

- Powder coated aluminum sliding windows / doors with mosquito net & granite window sill on all 4 sides of windows.



KITCHEN

- Kitchen platform in granite with S.S. sink.
- Wall tiles up to lintel level & provision of exhaust fan.



TOILET

- Sanitary Fixtures- Standard.
- Plumbing Fixtures- Standard.



ELECTRICAL

- Concealed wiring with modular switches (Anchor / Legrand or Equivalent).
- A.C. Point in all bedrooms & invertors point in each room.



PAINTING

- Internal: Wall Putty / Gypsum wall punning & plastic paint for internal walls.
- External: Premium quality acrylic paint.



PLUMBING

- Concealed plumbing with hot & cold mixer unit in each toilet (Jaquar / Plumb tech or Equivalent).
- Standard sanitary fitting in all the toilets.



PARKING

- Parking space with paving blocks / parking tiles / tremix & one - 4 wheeler parking space for each flat (covered or open parking).



WATER TANK

- Common over head & underground water tank with separate partition for domestic use & portable water with electric motor.



LIFT

- Lift with battery backup (Otis / Schindler / Kone or Equivalent)

LOCATION MAP



KEY DISTANCES

02 min.	Hospitals	Vegetable Market	Highway	D-Mart Mall	School
05 min.	Restaurants	Multiplex	Garkheda Stadium		
10 min.	Bus Stand	Railway Station	Waluj MIDC		
15 min.	Airport	Prozone Mall			

AMENITIES

Electronic Vehicle Charging Point. (Optional)	Battery Backup for Lift.	Solar Panels for Common Area Lighting.	Mechanical Stack Parking. (Optional)	CCTV At Designated Areas.
---	--------------------------	--	--------------------------------------	---------------------------



Project By



NABHRAJ CONSTRUCTION

Email - nabhraj@yahoo.com Website - www.nabhrajgroup.com

Office Address

"Nabhraj Nandanvan", Opp. Airport, Chikalthana, Jalna Road, Chh. Sambhaji Nagar.

Site Address

Plot No. 26, Samrat Nagar, Near Roplekar Hospital, Shahanoorwadi, Chh. Sambhaji Nagar.

Booking Contact

8888 4408 88, 9923 9444 24



Maha Rera No.
P51500054571

Member Of
CREDAI
CHHATRAPATI SAMBHAJI NAGAR

CREDITS

Architect
Anurag Butole

RCC Consultant
Rajesh Vargantwar

Legal Advisor
Prakash Paithankar

Rendering & Media
Elevation Studio

Disclaimer : This brochure is purely conceptual & not a legal offering. The plans, specifications, images & other details herein are indicative, furniture & accessories will not be provided by the developer & the developer / owner reserves all the rights to change. All dimensions mentioned in the drawings may vary / differ due to construction contingencies & site conditions. All dimensions are shown from unfinished surfaces. The printed material does not constitute a offer of any type between the developer / owner & the recipient. Any purchase / lease of this development shall be governed by terms & conditions of agreement for sale / lease entered into between parties & no details mentioned in this printed material shall in any way govern such transaction.